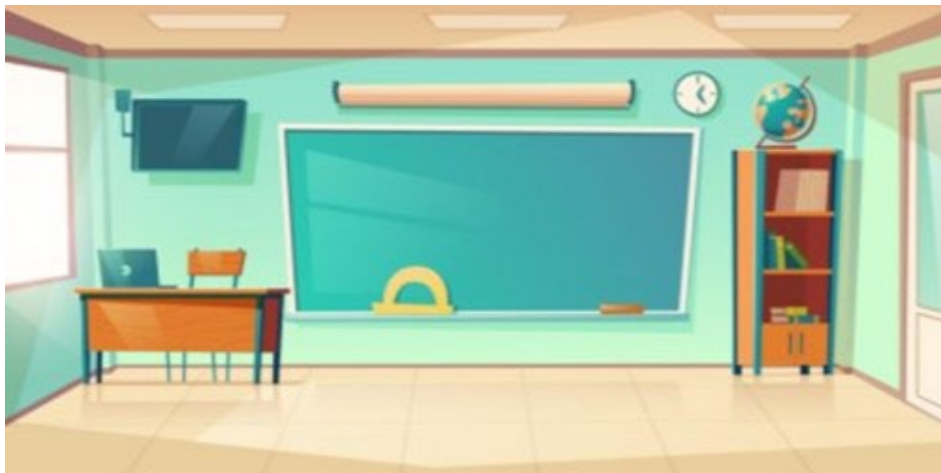




SAFEGUARDING BOARD
ISLE OF MAN



Training Schedule

April 2024 – March 2025
(updated December 2024)

Dates	Subject – click hyperlink for further information	Level	Page Number
22 November 2024 21 January 2025, 21 March 2025	Safeguarding Children Awareness	2	1
11 October 2024	Safeguarding Children Awareness Refresher		1
21 October 2024, 15 November 2024, 14 February 2025	Safeguarding Adults' Awareness	2	2
07 February 2025	Core Groups and Conferences	3	3
04 February 2025	Managing Allegations Strategy Meeting (MASM)	3	4
1 October 2024	Professional Curiosity Workshop	3	5
2, 3 & 12 December 2024	Self-Neglect Level 3	3	6
9 December 2024	Domestic Abuse 2	2	7
10 & 11 December 2024	Domestic Abuse 3	3	8
29 January 2025	Designated Safeguarding Lead	3	9
	Booking Form	-	11 & 12

[Safeguarding Children's Competency Framework](#)

[Safeguarding Adult's Competency Framework](#)

Safeguarding Children Awareness Level 2 & Refresher Training



Who delivers the training?

The Safeguarding Children Awareness courses will be led by the Safeguarding Board training and development officer with a trainer from our pool. Safeguarding Training needs to be refreshed every 3 years and, alongside our full day SCA training, we offer refresher sessions too. The refresher sessions are slightly shorter and faster paced and are designed for those practitioners who have previously completed a safeguarding level two course. In 2024/ 2025 all Safeguarding Children level 2 & refresher training is being held at The Lodge.

Who is this training aimed at?

To attend the Safeguarding Children Awareness/ Refresher training there is an expectation that the on-line level 1 training will have been completed. According to the [Children's Competency Framework](#) this training is for all staff who work regularly with children and young people and may be in a position to identify concerns. Teachers and Educational Support officers, Hospital and Adult Community Health staff, Police [not MAPPU], Probation Officers, Clinical Psychologists and Youth Workers and Foster Carers. If you are unclear about which level of training is suitable within your role then please read the children's competency framework and speak with your line manager who should be able to help you.

What are the course aims?

SAFEGUARDING CHILDREN AWARENESS LEVEL 2 & REFRESHER TRAINING

- 1 To understand child protection responsibilities of your organisations and individuals who work within them.
- 2 To recognise some common indicators of abuse
- 3 To identify steps to take if you have a concern about a child or young person
- 4 To recognise the factors that ensure Safe Working Practices within the environment and promote a safeguarding culture
- 5 To explore the legislation around information sharing

Adult Safeguarding Training Level 2



Who delivers the training?

The training was developed by the TDO in partnership with senior Social Workers and Managers in the Adult Safeguarding Team. These are full day training sessions. Venue TBC

Who is this training aimed at?

According to the [Adult Safeguarding Competency Framework](#), this training is for All staff who have regular contact with clients, patients, their families and/or carers or the public e.g. carer, nurse, frontline medical staff, Adult Social care staff, Police Officers, GP's, Advocates, Ambulance staff, Fire service personnel, Prison & Probation staff, Social Workers in all health & social care fields. If you are unclear about which level of training is suitable within your role then please read the Adult Competency Framework and speak with your line manager who should be able to help you.

What are the course aims?

ADULT SAFEGUARDING TRAINING

Level 2

- To familiarise practitioners with key legislation, guidance and policy
- Look at categories of abuse / neglect and possible indicators of abuse
- Look at key requirements of local policy and procedures
- Consider roles & responsibility in how to respond, report & refer issues of abuse and neglect
- Considering professional curiosity.
- Information Sharing
- Discuss 'Whistle-blowing', when it is necessary to protect adults from abuse and neglect

Core Groups & Child Protection Conferences Training

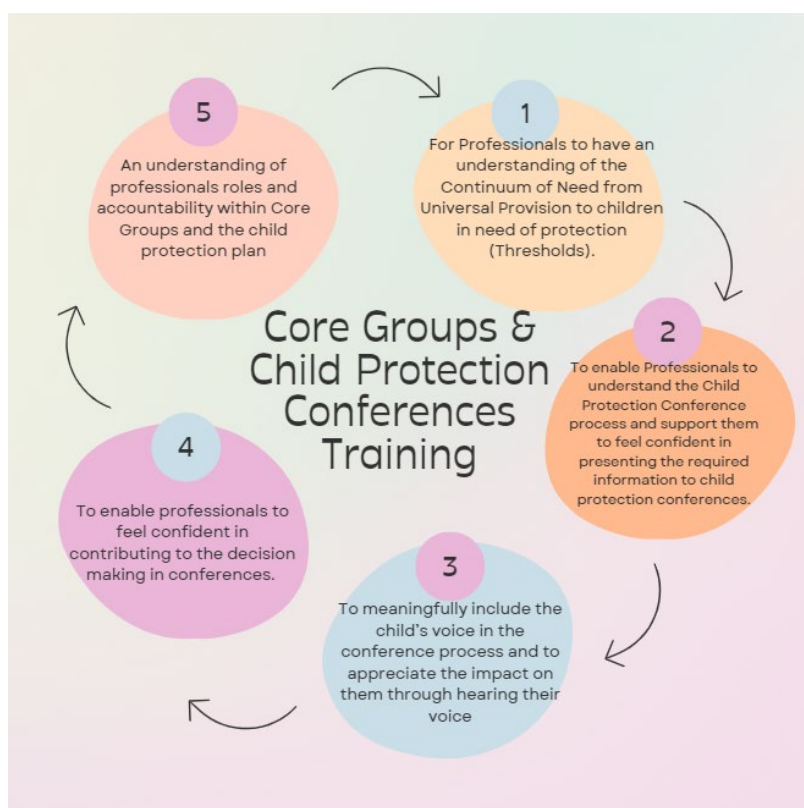
Who delivers the training?

The Independent Review Team including the Children's rights champion, run this day long course. This team chair the child protection conferences and seek to equip professional to effectively understand and contribute to the child protection process. This training has been booked at the Lodge.

Who is this training aimed at?

According to the children's [competency framework](#) for safeguarding practitioners, this training is for Level 3 Staff. All staff working with children, young people and who could potentially contribute to assessing, planning, intervening and evaluating the needs of a child or young person and parenting capacity where there are safeguarding/child protection concerns, including S46 enquiries. E.g. Head Teachers/Designated teachers, GPs, Midwives, Health Visitors, School Nurses, CAMHS, Children and Families Social Workers, Education Liaison Officers, Police (MAPPU), Family Centre staff, Educational Psychologists, Children's Ward Nurses, Residential and Secure Care Workers. If you are unclear about which level of training is suitable within your role then please read the children's competency framework and speak with your line manager who should be able to help you.

What are the course aims?



Managing Allegations Strategy Meetings Level 3

Who delivers the training?

Victoria Creed (Designated Officer, Children) will be facilitating this training session. The training will be held at the Lodge.

Who is this training aimed at?

Safeguarding leads and managers for organisations whose employees hold a position of trust with either vulnerable adults or children.

What are the course aims?



Professional Curiosity Workshop Level 3

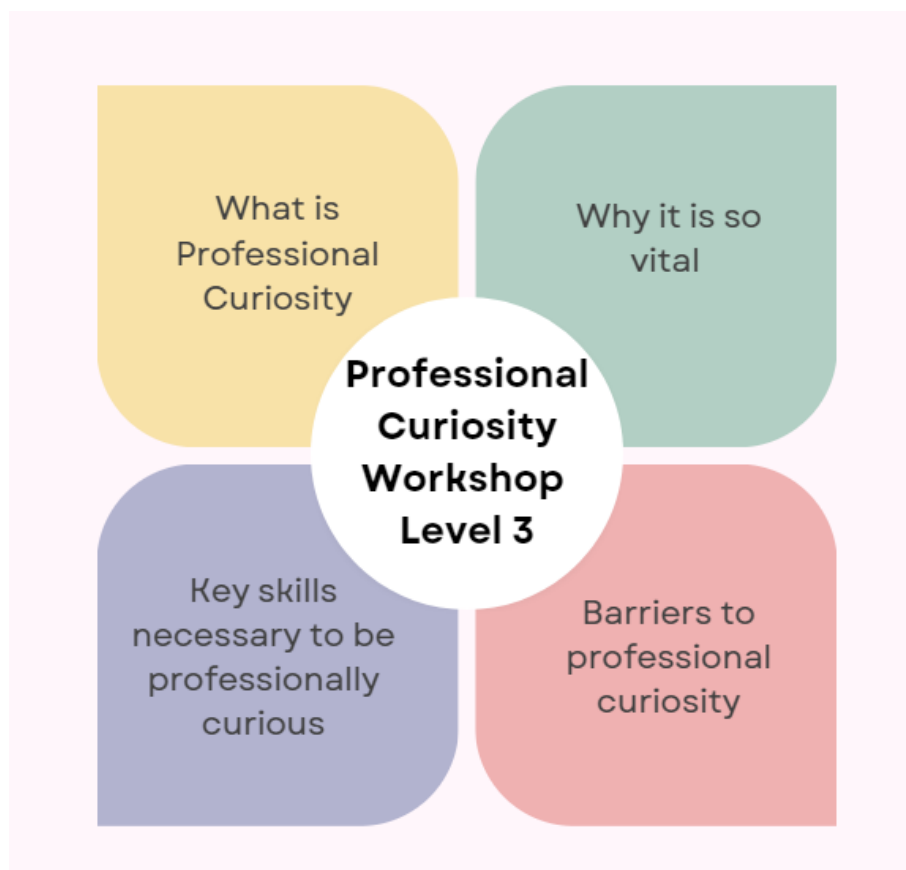
This workshop is facilitated by;

Grainne Burns the Child Protection & Safeguarding Officer Education Welfare Service Manager and Victoria Creed the Senior Independent Reviewing Officer. Both of these workshops will be taking place at the Lodge training centre.

Who is this training aimed at?

Staff working with children, young people and who could potentially contribute to assessing, planning, intervening and evaluating the needs of a child or young person and parenting capacity where there are safeguarding/child protection concerns, including S46 enquiries. E.g. Head Teachers/Designated teachers, GPs, Midwives, Health Visitors, School Nurses, CAMHS, Children and Families Social Workers, Education Liaison Officers, Police (MAPPU), Family Centre staff, Educational Psychologists, Children's Ward Nurses, Residential and Secure Care Workers.

The aims of this interactive workshop are for professionals to work together to explore



Self Neglect Training Level 3

Who delivers the training?

It will be delivered as an interactive 'workshop' style approach to examining practical application of guidance.

This workshop is facilitated by

Facilitator is Sylvia Manson who is a safeguarding consultant who worked with the Safeguarding Board to develop the strategy, guidance and procedures which can be found on the Safeguarding Board website [here](#)

Who is this training aimed at?

Full day training session for staff working with adults who engage in assessing, planning, intervening and evaluating the needs of adults where there are self-neglect concerns



The Essentials of Domestic Abuse Level 2



Who delivers the training?

Siobhan Burns is a safeguarding consultant commissioned to deliver this training on behalf of the Safeguarding Board. The venue for this is St John's Mill

Who is this training aimed at?

According to our [Competency Framework](#) for Children's practitioners and the [Competency Framework](#) for Adult practitioners, the Level 2 training is for 'all staff who work regularly with children and young people and may be in a position to identify concerns. E.g. Teachers and Educational Support officers, Hospital and Adult Community Health staff, Police [not MAPPU], Probation Officers, Clinical Psychologists, Youth Workers and Foster Carers.' Also 'all staff who have regular contact with adult clients, patients, their families and/or carers or the public e.g. carer, nurse, frontline medical staff, Adult Social care staff, Police Officers, GP's, Advocates, Ambulance staff, Fire service personnel, Prison & Probation staff, Social Workers in all health & social care fields.'

What are the course aims?

What are the course aims?

- Understanding domestic abuse and coercive control
- Signs and indicators of DA
- Impact of domestic abuse on adults and children
- Legislation
- Taking protective steps

Domestic Abuse Training Level 3



Who delivers the training?

Siobhan Burns is a safeguarding consultant commissioned to deliver this training on behalf of the Safeguarding Board. The venue for this is St John's Mill.

Who is this training aimed at?

According to our [Children Competency Framework](#) and the [Adult Competency Framework](#); Level 3 practitioners include all registered Health and Social Care staff working with adults assessing, planning, identify interventions, and evaluate adult's needs where there are safeguarding concerns. e.g. GP's, MH Nurses, MH Social Workers, Residential Care Workers, Adult Social Workers, clinical Psychologist, clinical Psychiatrist, Dentist. Also, all staff working with children, young people assessing, planning, intervening and evaluating the needs of a child or young person and parenting capacity where there are safeguarding/child protection concerns, including S46 enquiries. E.g. Head Teachers/Designated teachers, GPs, Midwives, Health Visitors, School Nurses, CAMHS, Children and Families Social Workers, Education Liaison Officers, Police (MAPPU), Family Centre staff, Educational Psychologists, Children's Ward Nurses, Residential and Secure Care Workers.

What are the course aims?

L3 DOMESTIC ABUSE TRAINING

Aims:

- Understanding domestic abuse and coercive control
- Signs and indicators of DA
- Impact of domestic abuse on adults and children
- Legislation
- Taking protective steps

Designated Safeguarding Lead Level 3

Who is leading the Training?

Grainne Burns is the Child Protection Safeguarding Officer Education Welfare Service Manager with a huge amount of experience within the education system. The training is an interactive half day course. It will be held at The Lodge training centre. Braddan Road, Strang, Douglas, IM4 4RF



Who is this training aimed at?

This training is essential for Designated Safeguarding Leads and their Deputies.

What are the course aims?

- To consider the key guidance and legal framework for Safeguarding.
- Identify the rationale for having a designated lead for safeguarding.
- List and explain the core responsibilities and scope of the safeguarding lead role.
- Describe the elements of a positive Safeguarding culture.
- Identify supports for managing challenges in the designated safeguarding role

SAFEGUARDING BOARD

COURSE APPLICATION FORM 2024/ 2025

We are currently running a manual booking system for courses whilst we await our new on line Training System. There will be firm criteria applied when considering any application made to ensure maximum impact of training is achieved across the partnership. Should courses be fully subscribed we will collate a waiting list and offer spaces to those colleagues who were unsuccessful at the time of application. We want to fairly allocate the availability across agencies.

In applying for the course you are also agreeing to being one of the 25% of attendees randomly selected to be contacted after 3 months for a short training impact interview. The IOMSB value feedback which we use to ensure our training remains relevant and demonstrates the impact of training on practice.

Please complete the following and return to the Safeguarding Board at SafeguardingBoard.CO@gov.im to apply for a place on the course.

A confirmation email will be returned to you. Course Title:	
Type:	
Delivered By:	
Level:	
Venue:	
Start & Finish Date & Time:	

DELEGATES INFORMATION

Please complete with your information:

First Name:	
Last Name:	
Do you have any access requirements you would like us to be aware of?	
Role:	

Sector:	
Organisation:	
Email & Contact Tel No:	
Reason for applying for a place on this course and aligned to the Boards Competence Framework:	

Please gain authorisation from your Line Manager prior to application:

AUTHORISATION BY LINE MANAGER

In authorising this booking you are agreeing to the applicants' attendance at training and a commit to supporting a reflective discussion on the impact of the training on their practice. Reflection helps to deepen the understanding of what was learned during the session and supports learning processes.

Line Manager Signature:	
Line Managers Name in Full: & Department:	
Email & Contact Tel No:	
Date:	
Reason for applying for a place on this course and aligned to the Boards Competence Framework	